

Columbia Shuswap Regional District

Seymour Arm Emergency Management Plan

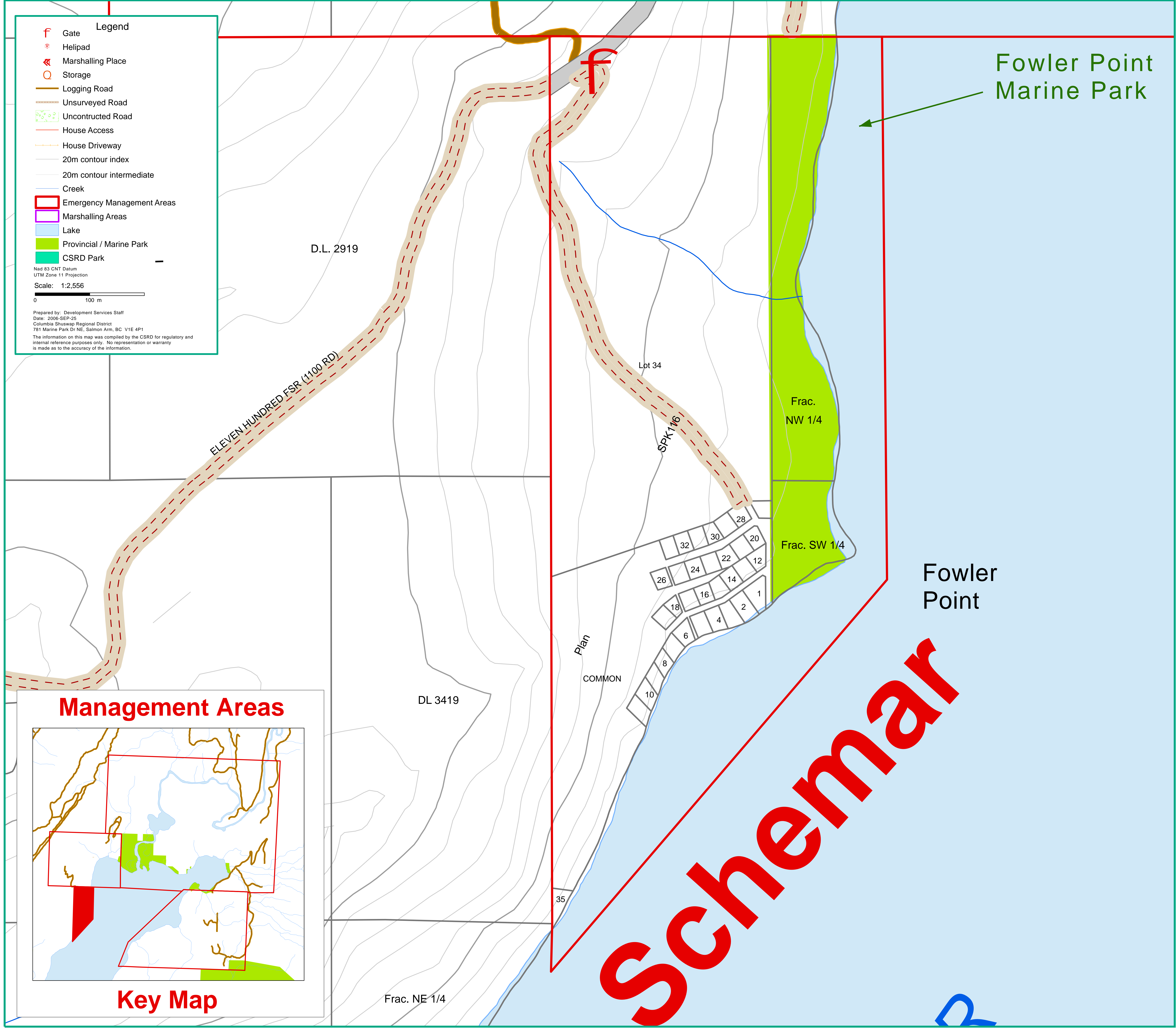


Legend

- f Gate
- ⊙ Helipad
- ⚡ Marshalling Place
- Storage
- Logging Road
- - - Unserved Road
- - - Unconstructed Road
- House Access
- House Driveway
- 20m contour index
- 20m contour intermediate
- Creek
- Emergency Management Areas
- Marshalling Areas
- Lake
- Provincial / Marine Park
- CSR Park

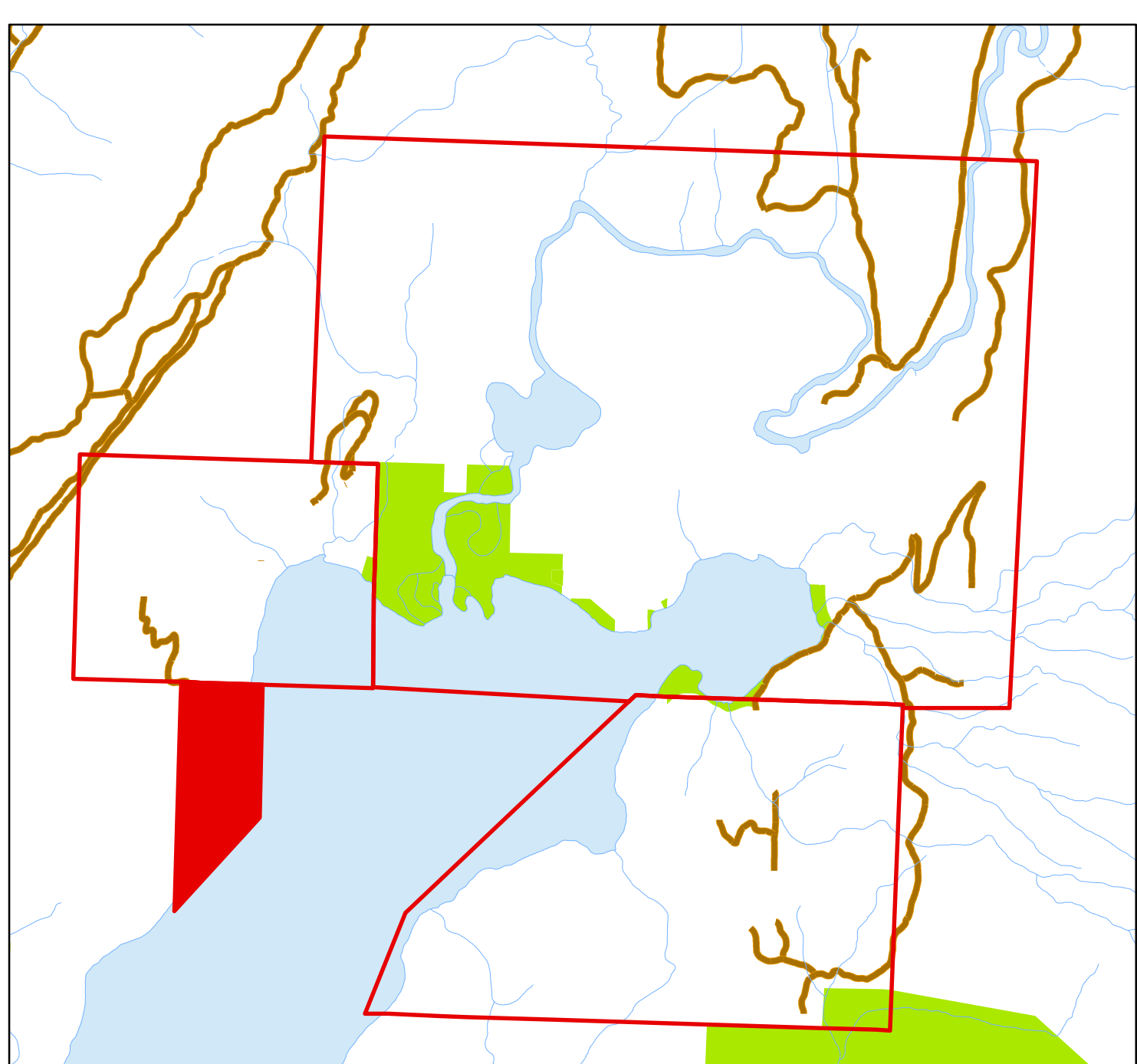
Nad 83 CNT Datum
UTM Zone 11 Projection
Scale: 1:2,556

Prepared by: Development Services Staff
Date: 2006-SEP-25
Columbia Shuswap Regional District
781 Marine Park Dr NE, Salmon Arm, BC V1E 4P1
The information on this map was compiled by the CSR for regulatory and internal reference purposes only. No representation or warranty is made as to the accuracy of the information.



Schemamar

Management Areas



Key Map